

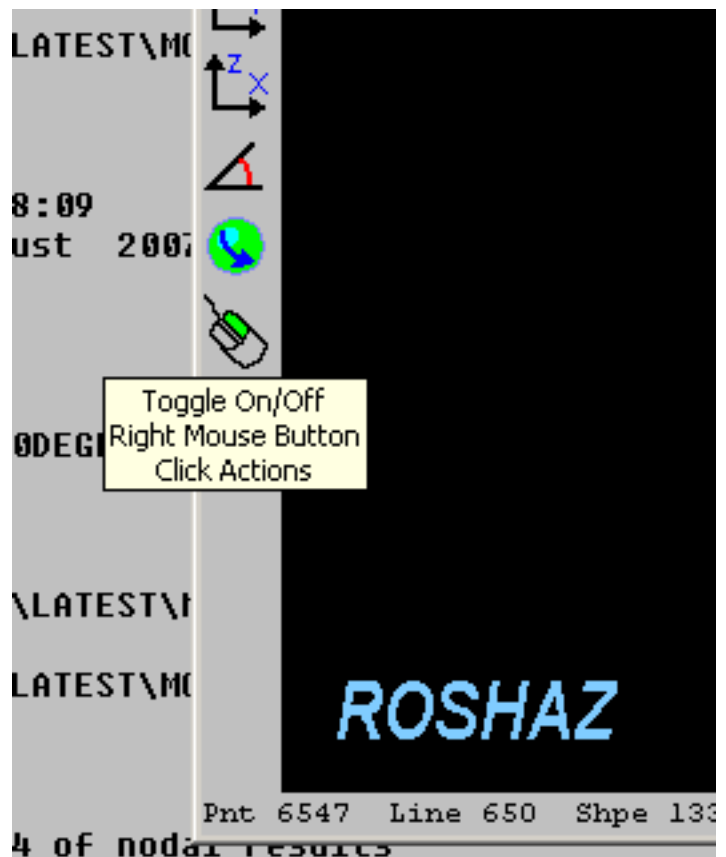
A green ball means that the image can be dynamically rotated, zoomed and panned using the left, right and middle mouse buttons respectively.

By clicking on the green ball icon, it turns red and switches off the mouse controlled image manipulation. A further click will change it back to green.

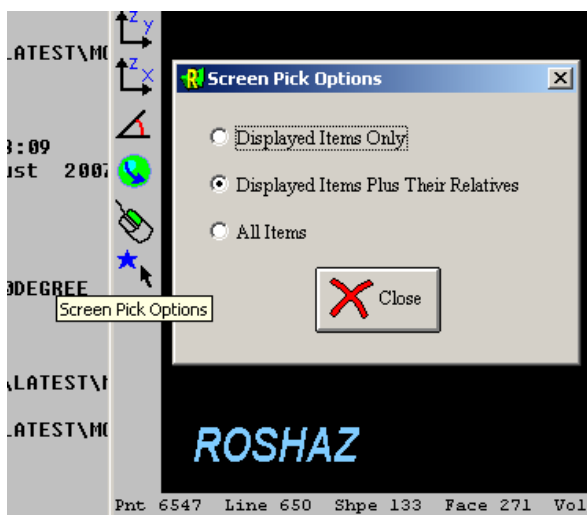
A middle button scroll wheel can also be used to zoom in and out.

When the right mouse button in this icon is green entities plotted in the graphics area will be highlighted when the mouse cursor passes over them. A right mouse click can then be used to display a pop up menu, which has a selection of actions that can be taken regarding the highlighted entity.

By clicking on this icon a green button becomes red and no highlighting will then take place. A further click will change it back to green again.



Clicking on the blue star and cursor icon brings up a dialog box to set control of picking of entities from the screen



This is the pop up menu that appears with a right mouse button click when an entity has been highlighted under the mouse cursor.

**Close** – simply closes the pop up menu

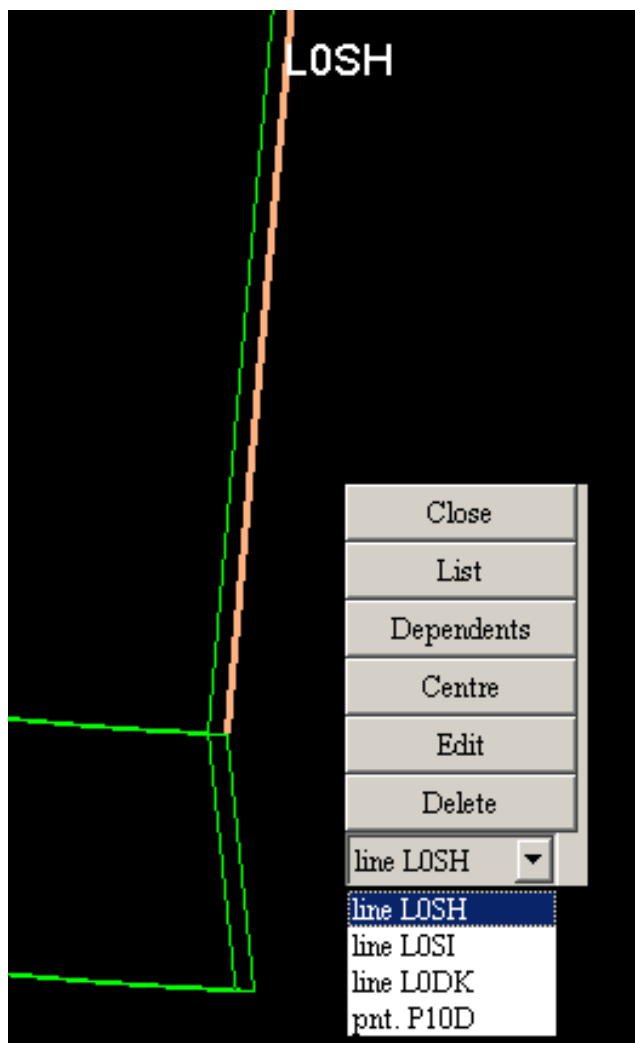
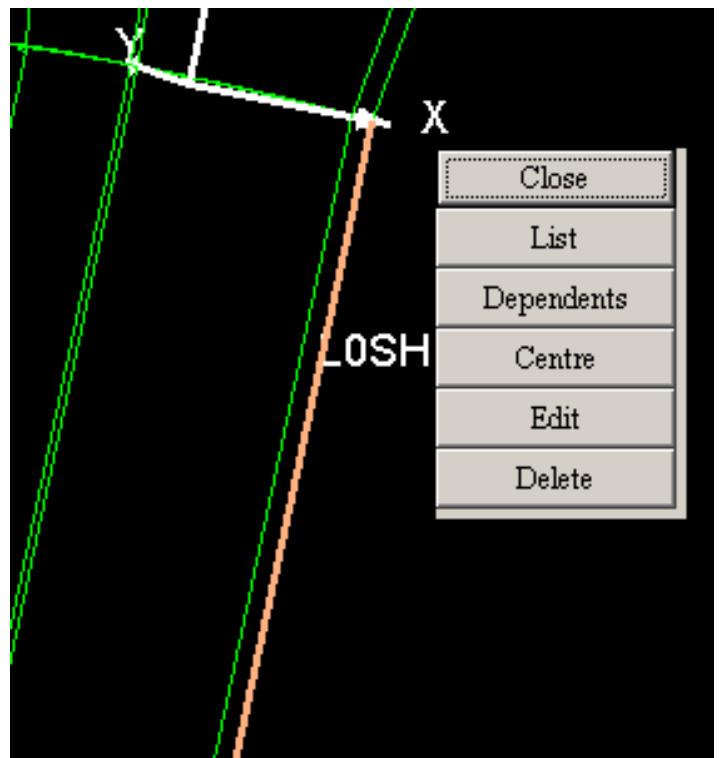
**List** – lists the entity definition

**Dependents** – lists which other entities refer to the highlighted entity in their definitions

**Centre** – makes this entity the centre for dynamic image rotation

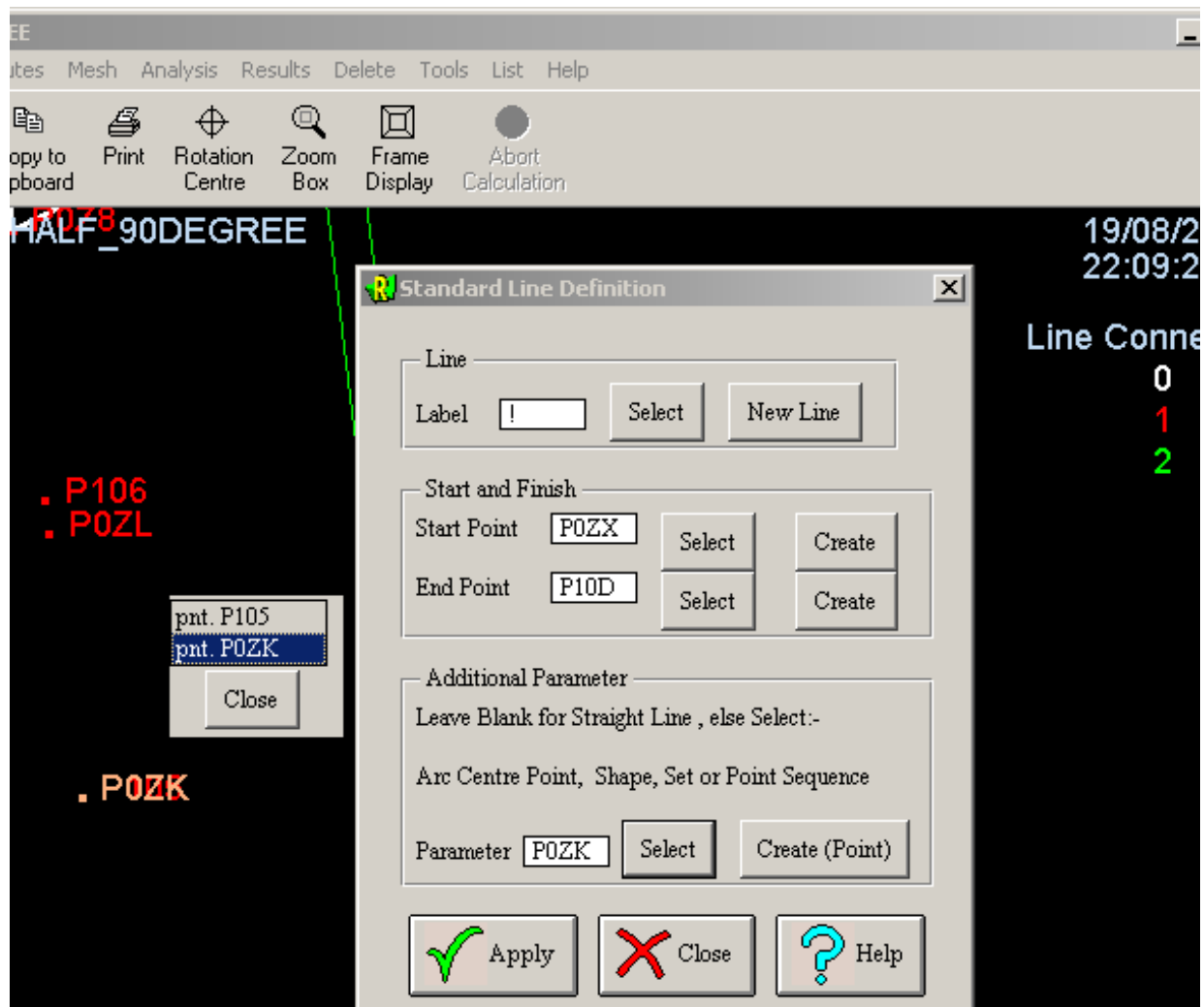
**Edit** – brings up the entity definition dialog to allow changes to be made.

**Delete** – deletes the entity



When two or more entities are close to the mouse cursor position then a drop down selection is used to select the desired entity.

With each selection the corresponding entity is highlighted.



When selecting entities to fill in a dialog box form using the mouse cursor and multiple entities exist at the same position or are very close to each other then a simple pop up selection menu appears to select the desired entity.

With each selection the corresponding entity is highlighted.